

**MAGNETA Vanity**  
**3-590-xx**

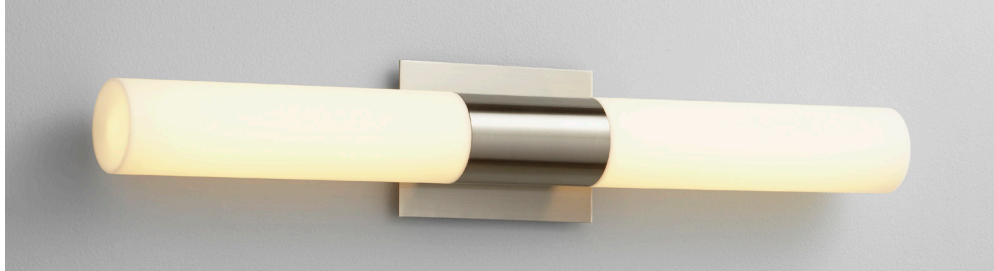
oxygen

FIXTURE TYPE \_\_\_\_\_

LOCATION \_\_\_\_\_

PROJECT \_\_\_\_\_

DATE \_\_\_\_\_

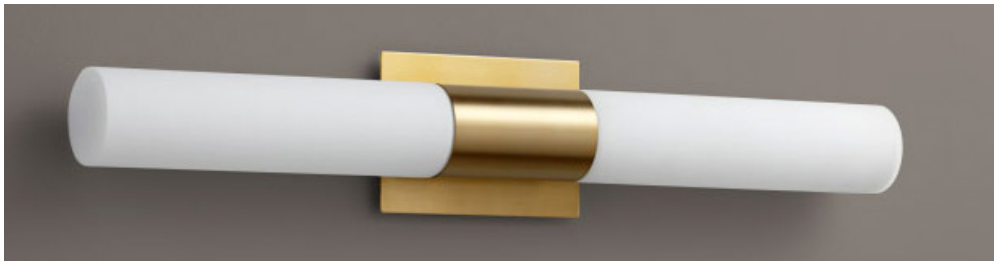


-24 Satin Nickel

Diffuser:

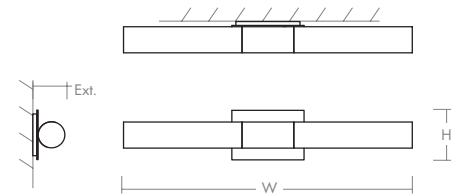


- Matte White Acrylic



-40 Aged Brass

- LIGHT SOURCE** 2 x 12.1W LED, 3000K, CRI 90
- LUMINAIRE POWER** 28.7W at 120V
- RATED LIFE** 60000 hr RL
- OPTIONAL COLOR TEMPERATURES** 2700K, 3500K, 4000K
- LUMEN OUTPUT** Delivered: 1872 lm (LM-79)
- INPUT VOLTAGE** 120V to 277V AC, 50/60Hz
- DRIVER OUTPUT** 700mA, 29.4W max power
- DIMMING** TRIAC and ELV dimming at 120V AC; 0-10V dimming, 100% to 10% current output
- CONSTRUCTION** Plated Steel and Acrylic
- DIFFUSER/ METAL FINISHES** (-24) Matte White Acrylic/Satin Nickel  
(-40) Matte White Acrylic/Aged Brass
- MOUNTING** 2" x 3" J-Box, 4" Octagonal J-Box, 4" Square J-Box with a single device mud ring
- STANDARDS** UL Dry/Damp listed, ADA Compliant, Conforms to UL STD 1598, Certified CAN/CSA STD C22.2 No 250.0.



**DIMENSIONS**

- W:** 27.00"
- H:** 4.75"
- Ext:** 3.375"
- M.C:** 2.38" From top of fixture

Order example for standard fixture:

**3-590-24** (x-xxx: LED Sequence # / -xx: Finish)

Order example for optional color temperatures: **3-590-2724**

27: 2700K, 35: 3500K, 40: 4000K

